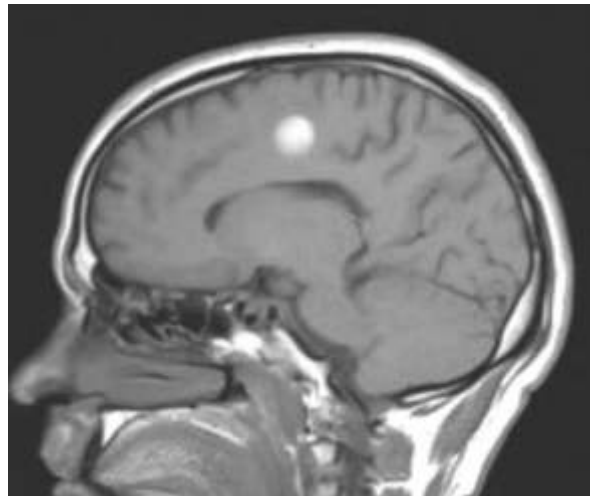


## IMAGING DIAGNOSIS



### Case of the Month

**35 year old female with convulsions, not investigated earlier.**

Findings reveal an intra axial, right sided lesion with old (chronic) hemorrhage within, with minimal surrounding edema. No significant contrast enhancement is noted within.

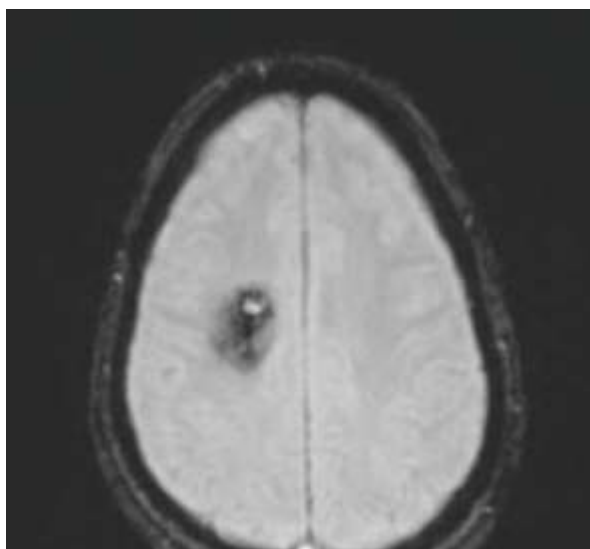
These findings are suggestive of a venous angioma.

### Discussion

The usual angiographic presentation of a cerebral venous angioma is a single transcerebral draining vein fed by a group of converging, dilated medullary veins. The transcerebral vein most often empties into a superficial cortical vein, but sometimes drains into the deep venous system. The absence of enlarged arteries of supply, of any capillary blush, and of arteriovenous shunting has been noteworthy in most reported cases.

CT and MRI, especially the latter show classic appearance of chronic hemorrhage within the lesion, with no significant enlarged arteries of supply, that helps in distinguishing this condition from an AV malformation.

Contribution by  
Dr. Raina Tembey



## HIGHLIGHTS OF HOLY FAMILY



### Cath Lab

- First of its' kind in Mumbai and 3rd in INDIA.
- Incorporates all the equipments, monitoring devices and technology required for cardiac catheterisation and surgery
- Can be used simultaneously for different procedures; thus beneficial.
- Eliminates the need for the patient to be transferred
- Reduces the risk factors and margin for error
- Enables the use of minimal invasive interventions
- Reduces recovery time

### MRI Machine



### Blood Bank



### Ambulance

- 24 hours Cardiac Ambulance
- Fully air-conditioned
- Oxygen, Ventilator, Cardiac Monitor
- E.C.G. Defibrillator, Suction Machine
- Nebulizer & Glucometer
- All emergency medicines, disposables & IV Fluids
- Always accompanied by ICU doctor and staff nurse.

